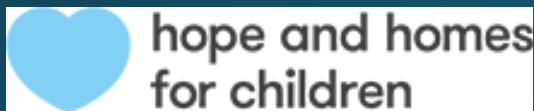




**Tracking Progress**  
initiative

# Measuring Progress in the Implementation of the Alternative Care Guidelines

**Better  
Care  
Network**



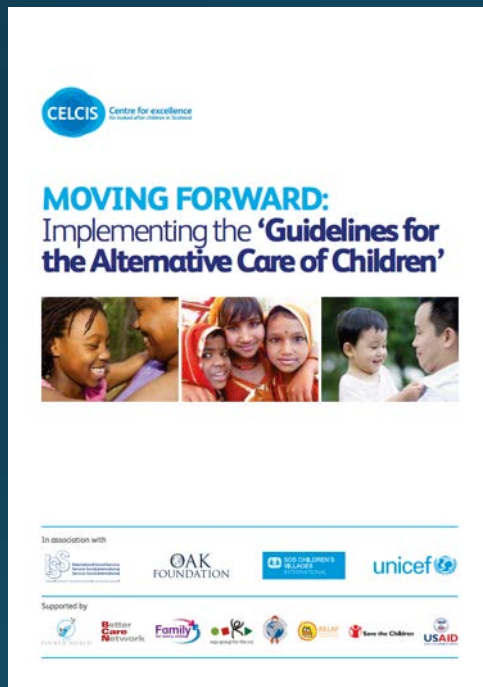
*With support from Oak Foundation*

# **The Guidelines for the Alternative Care of Children**

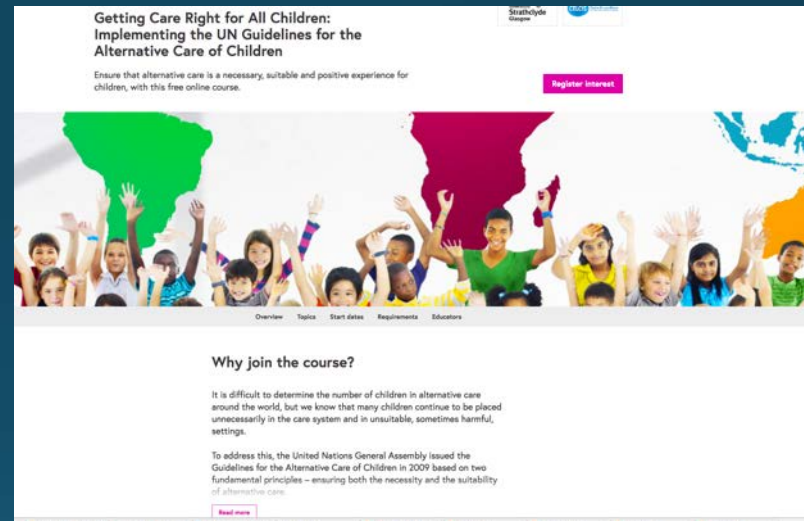
- Endorsed by UN General Assembly in 2009**
- Authoritative guidance on implementation of UN CRC and other international standards relating to children's care**
- Focus on preventing child-family separation and ensuring provision of appropriate alternative care**

# Inter-agency support to implement Guidelines

## The Handbook



## Massive Online Open Course



## The Tracking Tool




# Aims of the tool

- Support national level actors to determine the extent to which their country is effectively implementing the Guidelines
- Enable cross sectoral collaboration and planning based on evidence
- Provide comprehensive framework for national care reform strategy
- Strengthen accountability by tracking progress over time

# HOW DOES IT WORK?

 Welcome

 About the Tool ▾

 Step-by-Step  
Guide to Using the Tool ▾

 Resources ▾

 Contact

 Video Tutorials

## Tracking Progress Initiative

Welcome to the *Tracking Progress Initiative*! This tool was developed to support those working on strengthening the care system for children at the country level to measure progress in the implementation of the [Guidelines for the Alternative Care of Children](#). The tool enables you to take stock of progress and identify challenges in the implementation of the Guidelines.

[Learn More »](#)

## How to Use the Tool

The Tracking Tool consists of six surveys which ask questions to help you gather information on children's care in your country. Through this tool, you will be able to enter, review, and analyse that data.

[Login or Sign up to Get Started! »](#)

# WEB BASED INTERACTIVE TOOL

# FRAMED BY THE ALTERNATIVE CARE GUIDELINES

**Q1**  
Is care genuinely needed?

Reduce the perceived need for formal alternative care

Discourage recourse to alternative care

**The Necessity Principle**

**Q2**  
Is the care appropriate for the child?

Ensure formal alternative care settings meet minimum standards

Ensure that the care settings meets the needs of the child

**The Suitability Principle**



Welcome

About the Tool

Step-by-Step  
Guide to Using the Tool

Step 1: Building a Team

Step 2: Preparing to Use  
the Tool

Step 3: Choosing an  
Approach

Step 4: Gathering Data

Step 5: Storing and  
Sharing Data

Step 6: Managing Users

Step 7: Entering Data

Step 8: Tracking Progress

Step 9: Analysing &  
Comparing Data

Resources

Contact

## Entering Data

In order to enter your data, you need to [log in](#). If you don't have a username yet, please, use the [contact form](#) to request one.  
After logging in, a new menu option named *'Enter Data'* will be available on the left of the screen

The data entering process is divided in 2 sections. Part A asks questions about the alternative care system in your country. Answering these questions allows you to provide a quick overview of the children's care situation in your country. If you want to provide more detailed information on thematic areas, please focus on providing responses to the questions in Part B, which includes four separate 'Themes'.

### Part A: Overview

Overview of the alternative care system in your country. Answers to the questions in Part A will provide general insights and provide an introduction to the more detailed thematic areas, which are covered in Part B.

### Part B: Thematic Areas

In depth exploration of four thematic areas. Each theme has sub themes which are divided into general and detailed indicators.

#### Theme 1

Addressing the factors that may lead to the need for any forms of alternative care.

#### Theme 2

Discouraging the use of formal alternative care unless necessary.

#### Theme 3

Ensuring formal alternative care meets minimum standards.

#### Theme 4

Ensuring that formal alternative care settings meet the best interests of the individual child.

# FOUR OVERARCHING THEMES

# It asks questions to help you gather information on children's care in your country

Input and share data  
(qualitative and  
quantitative)

Identify gaps in  
data and  
implementation

Set priorities and  
agree on plan to  
address them



Tracking Progress View & History

Q06.a. What are the main reasons for children entering alternative care?

<input type="checkbox"/> Poverty	<input type="checkbox"/> Abandonment	<input type="checkbox"/> Recruitment by care providers of residential care or other facilities
<input type="checkbox"/> Family relinquishment	<input type="checkbox"/> Parental migration	<input type="checkbox"/> Other I
<input type="checkbox"/> Disability of child	<input type="checkbox"/> Death of parent(s)	<input type="checkbox"/> Other II
<input type="checkbox"/> Disability <b>Disability</b> <small>'Persons with disabilities include those who have long-term physical, mental, intellectual or sensory impairments which in interaction with various barriers may hinder their full and effective participation in society on an equal basis with others' Article 1, Convention on the Rights of People with Disabilities.</small>	<input type="checkbox"/> Conflict (war)	<input type="checkbox"/> Other III
<input type="checkbox"/> Removal neglect	<input type="checkbox"/> Natural disasters	<input type="checkbox"/> Other IV
<input type="checkbox"/> Child left	<input type="checkbox"/> Access to education	<input type="checkbox"/> Other V

Q06.b. Numbers, percentage or estimate relating to child population.

Q06.c. Data source and date of collection where available



# UNDER EACH KEY THEME, USERS CAN...

Update data regularly

Analyse the data over time

Measure change & track progress

The screenshot shows the 'Tracking Progress' tool interface. The left sidebar contains navigation options: Welcome, About the Tool, Step-by-Step Guide to Using the Tool, Use the Tool (highlighted), Enter Data, Review & Analyse Data (highlighted), Compare Data, My Working Group, Resources, Contact, and Video Tutorials. The main content area displays a plan for 'Sarah Johnson Sep-12-2017' with details on geographic span, user, and survey overview. A yellow box provides a reference list for cross-referencing survey questions. Below, there are sections for context, goals, follow-up needed, and comments, each with a 'Please, click to edit' link. A progress bar shows 0.00% completion, and the last reviewed date is Sep-12-2017.

Extract data and report

The screenshot shows the 'Tracking Progress' tool interface for data analysis. The left sidebar is identical to the previous screenshot. The main content area displays a section for generating tables and graphs from entered data. A dropdown menu allows selecting questions, with 'Sub Theme 1' and 'Sub Theme 4' selected. The selected questions are: Q40 (What is the number and/or percentage of children living in informal care arrangements?) and Q42 (What is the percentage or proportion of children in informal care as a proportion of the total number of children under 18 in the country?). A bar chart is displayed below, showing the results for Q42 (red bar) and Q40 (teal bar). The x-axis represents the number and/or percentage of children, ranging from 0 to 24.

Question	Value
Q42: What is the percentage or proportion of child	22
Q40: What is the number and/or percentage of child	22

# Who can use it?

- **Best supported by a national working group of key actors working on children's care and care reforms**
- **Brings together Government, UN Agencies, civil society and other stakeholders**
- **Owned and managed at the national level: Data and tool can be hosted on local server or global server**
- **'Open source' – Free tool that can evolve with needs in context and over time**

# What Next?

- **Development of guidance and training material for country level actors based on experience of using the tool in 5 countries**
- **Countries selected will represent diverse socio-economic contexts, types of care systems, and stages of development or reform of system.**

# Questions?

Email us at

[support@trackingprogressinitiative.org](mailto:support@trackingprogressinitiative.org)

To access the tool:

[www.trackingprogressinitiative.org](http://www.trackingprogressinitiative.org)