



Transforming Children's Care

GLOBAL COLLABORATIVE PLATFORM

Spotlight Series on Foster Care Practice: Webinar 3 - Safety and Protection in Foster Care

2 June 2022

This webinar
will begin
momentarily.





Transforming Children's Care

GLOBAL COLLABORATIVE PLATFORM

Spotlight Series on Foster Care Practice: Webinar 3 - Safety and Protection in Foster Care

2 June 2022





Transforming Children's Care

GLOBAL COLLABORATIVE PLATFORM

Spotlight Series on Foster Care Practice: Webinar 3 - Safety and Protection in Foster Care

2 June 2022

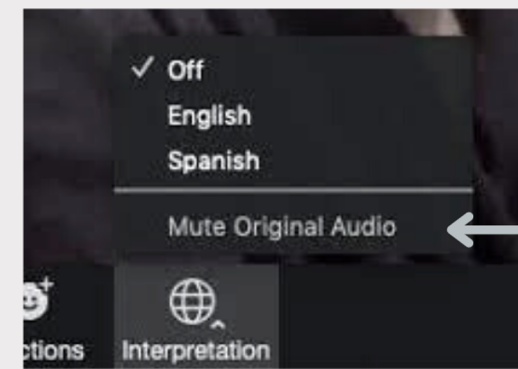


¡Bienvenidos!

Este evento cuenta con interpretación simultánea inglés-español. Cuando esté activada la interpretación, sigas estas instrucciones:

1. En los controles, presione la opción **Interpretación**.

2. Haga clic en el idioma que desee escuchar.



Silenciar el audio

WELCOME

- This webinar is hosted by the Transforming Children's Care Global Collaborative Platform
- The platform establishes more strategic sector-wide collaboration from global to local levels to strengthen children's care and care systems
- Sign up at the link in the chat to join the platform and receive updates about future webinars



Transforming Children's Care

GLOBAL COLLABORATIVE PLATFORM

Friendly Reminder: Please speak slowly and
clearly

BARBRA ABER

Regional Family Care Advisor,
Catholic Relief Services



Transforming Children's Care

GLOBAL COLLABORATIVE PLATFORM

HOUSEKEEPING

- This webinar is being recorded and the recording will be made available to you in Spanish and English.
- Introduce yourself in the chat (select “Panelists and Attendees” when sending a message so everyone can see it)
- Use the Q & A to ask questions and upvote and comment on the questions of other attendees.



SPOTLIGHT SERIES ON FOSTER CARE PRACTICE

We will be holding a monthly spotlight webinar that focuses on various aspects of foster care practice

Upcoming dates for the webinar series

- 14 July
- 18 August



Transforming Children's Care

GLOBAL COLLABORATIVE PLATFORM

AGENDA

Welcome

Presentations

Panel Discussion and Q & A

Upcoming opportunities and closing



Transforming Children's Care

GLOBAL COLLABORATIVE PLATFORM

LOUISE COX

International Programme Manager
Martin James Foundation



Transforming Children's Care

GLOBAL COLLABORATIVE PLATFORM



ASSESSMENT (ENGLAND)

- Motivation to foster
- Background and experiences of the carer
- Views of the carer
- Home environment
- Who lives in the household
- Support network of the carer



KEY THOUGHTS

How will a child feel living here

Would I want my own child to live here

Ask the question

Did anything make me uncomfortable

Think the unthinkable

Am I being fair and objective

Does the information correlate

WHAT MAKES YOU FEEL SAFE?

ANDI BRIERLEY

University Teacher and
lived experience author,
Leeds Trinity University
(UK)





Foster Care Webinar

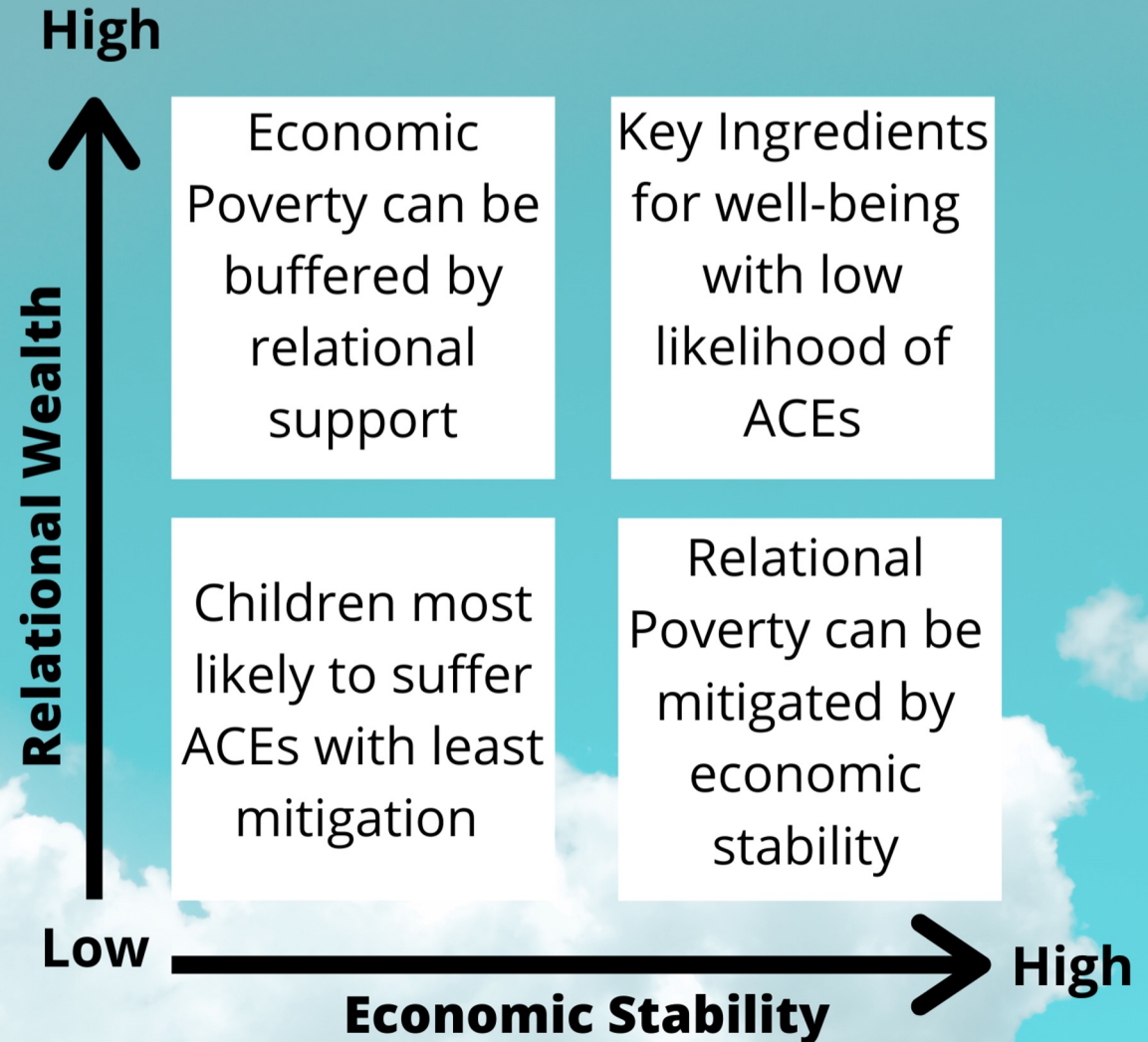
Andi Brierley – Leeds Trinity University

Relational Poverty

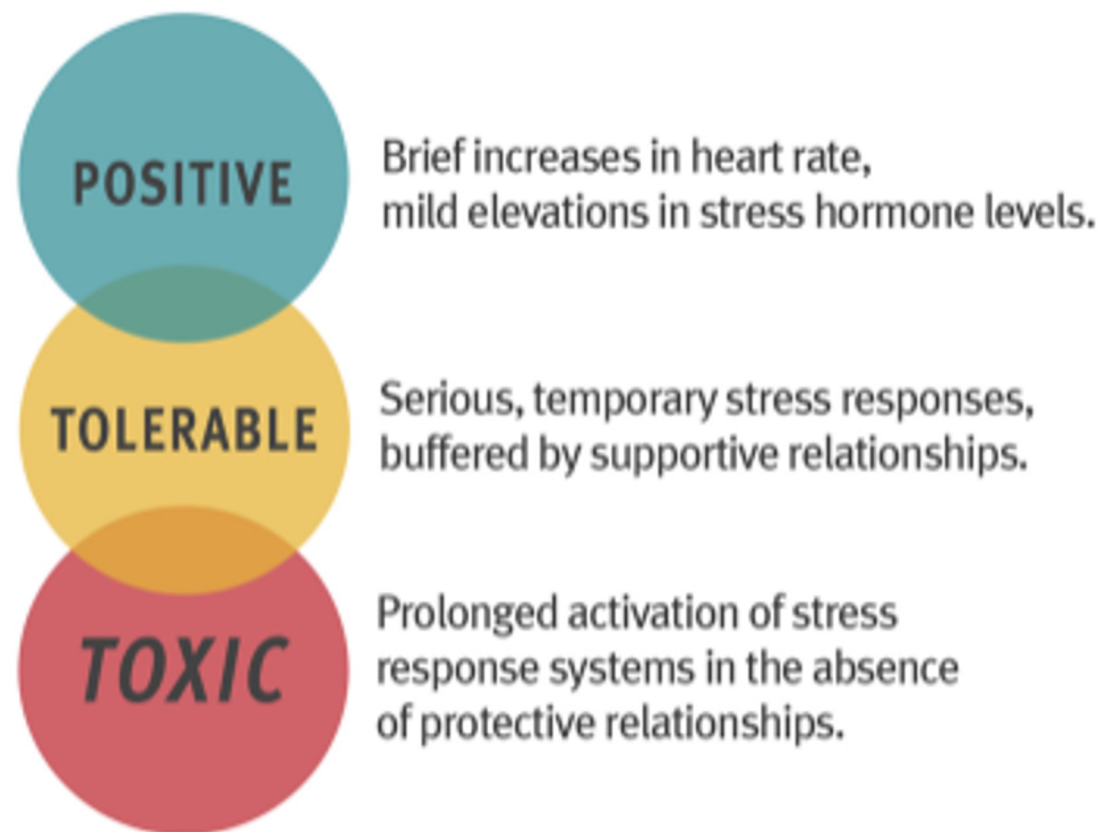
Bruce Perry

Pobreza relacional: Un entorno ausente de conexión relacional predecible, cálida y segura.

ACEs & Social Inequality Window



Toxic Stress



**Centre on the Developing Child
Harvard University (2021)**

Presence

Attunement

Connection

Trust



**ANDERSON
SELVASEGARAM**

Executive Director, SUKA
Society, Malaysia



Transforming Children's Care

GLOBAL COLLABORATIVE PLATFORM



SUKA Society's

Community Placement & Case Management Program (CPCM)

PART A:
Introductory Video

PART B:
Community Placement and Case Management Process & Life Cycle

Part A: Introductory Video





SUKA SOCIETY

IS A NON GOVERNMENTAL
ORGANISATION SET UP TO
PROTECT AND PRESERVE
THE BEST INTEREST OF
CHILDREN

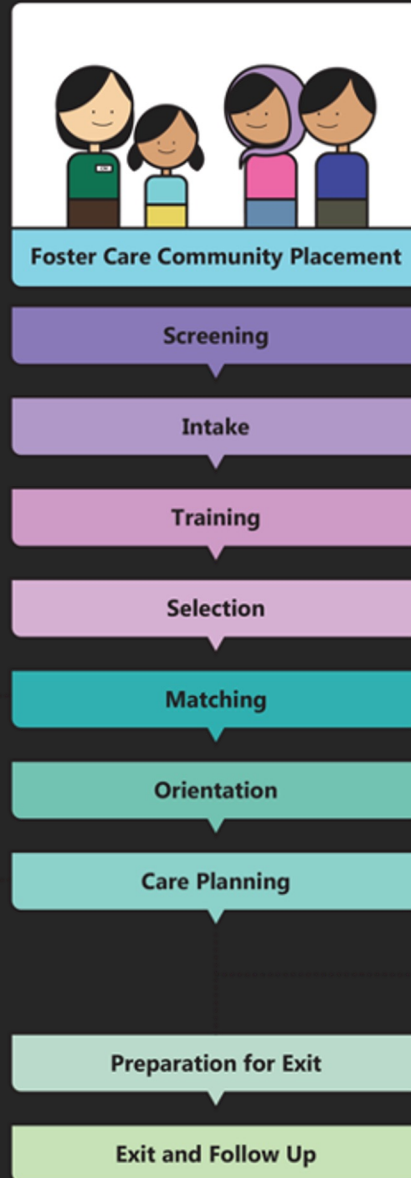
Part B: CPCM Process

Two Approaches:

- Community placement and use case management as a tool.
- Case management with community placement as a subset to address alternative care needs.

CPCM adopts the 2nd approach due to the vulnerability concerns faced by unaccompanied and separated minors (UAM) and the challenging environment experienced by the community (foster parents).

Community Placement Process

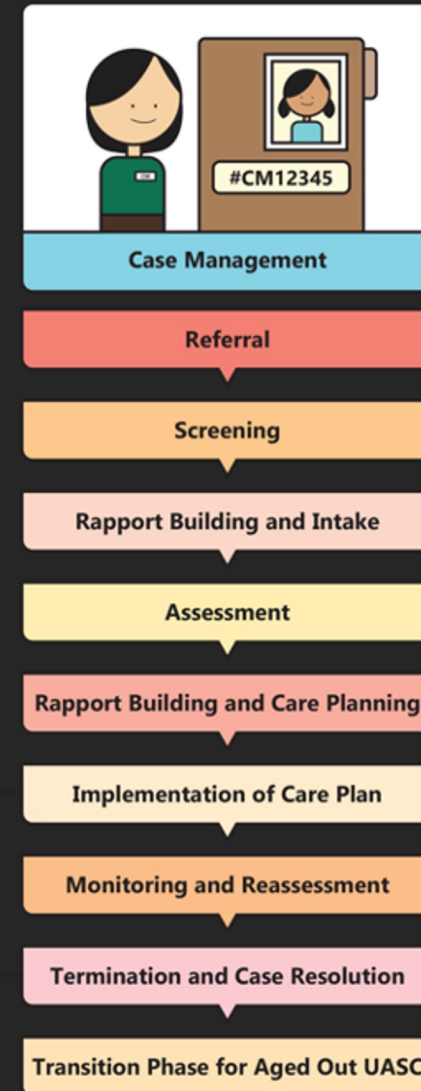


Matching conducted if a child is assessed to be placed with a foster family

To be conducted with foster parents if a child is placed with a foster family

Collaboration between foster parents and case managers to implement the care plan by providing feedback, supporting the care plan and preparing the UASC for exit

Case Management Process



To be conducted with foster parents if a child is placed with a foster family

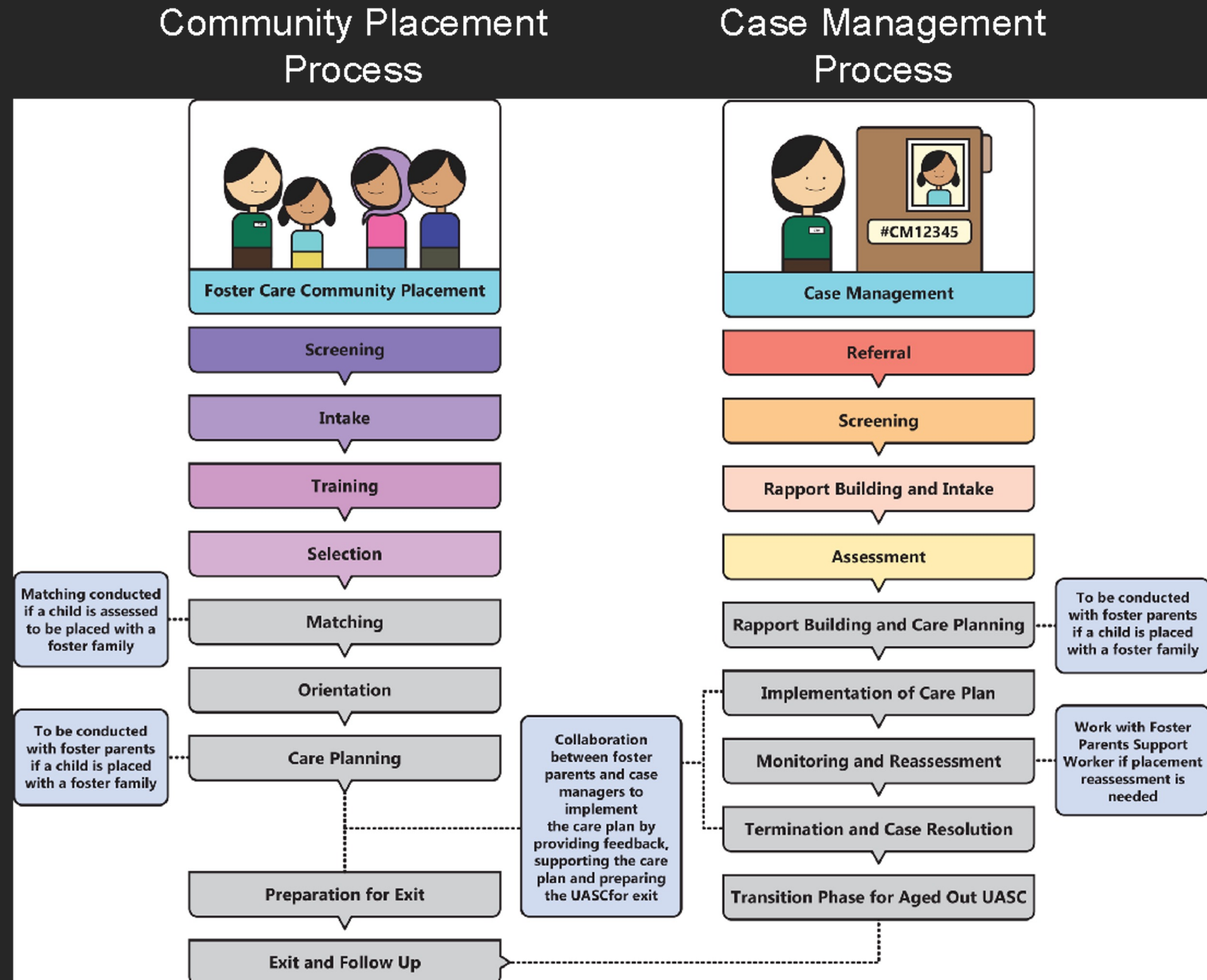
Work with Foster Parents Support Worker if placement reassessment is needed

CPCM Process

The starting point for the Case Management Process is when a UAM comes to the attention of our agency. Referrals can be made to us by:

- Community leader
- School teacher
- UAM's family member
- UAM themselves
- NGO/ CBOs
- UN/ Hospitals or government agencies

As for the Community Placement Process, potential foster parents are identified through our network with the communities of similar background as the UAM.

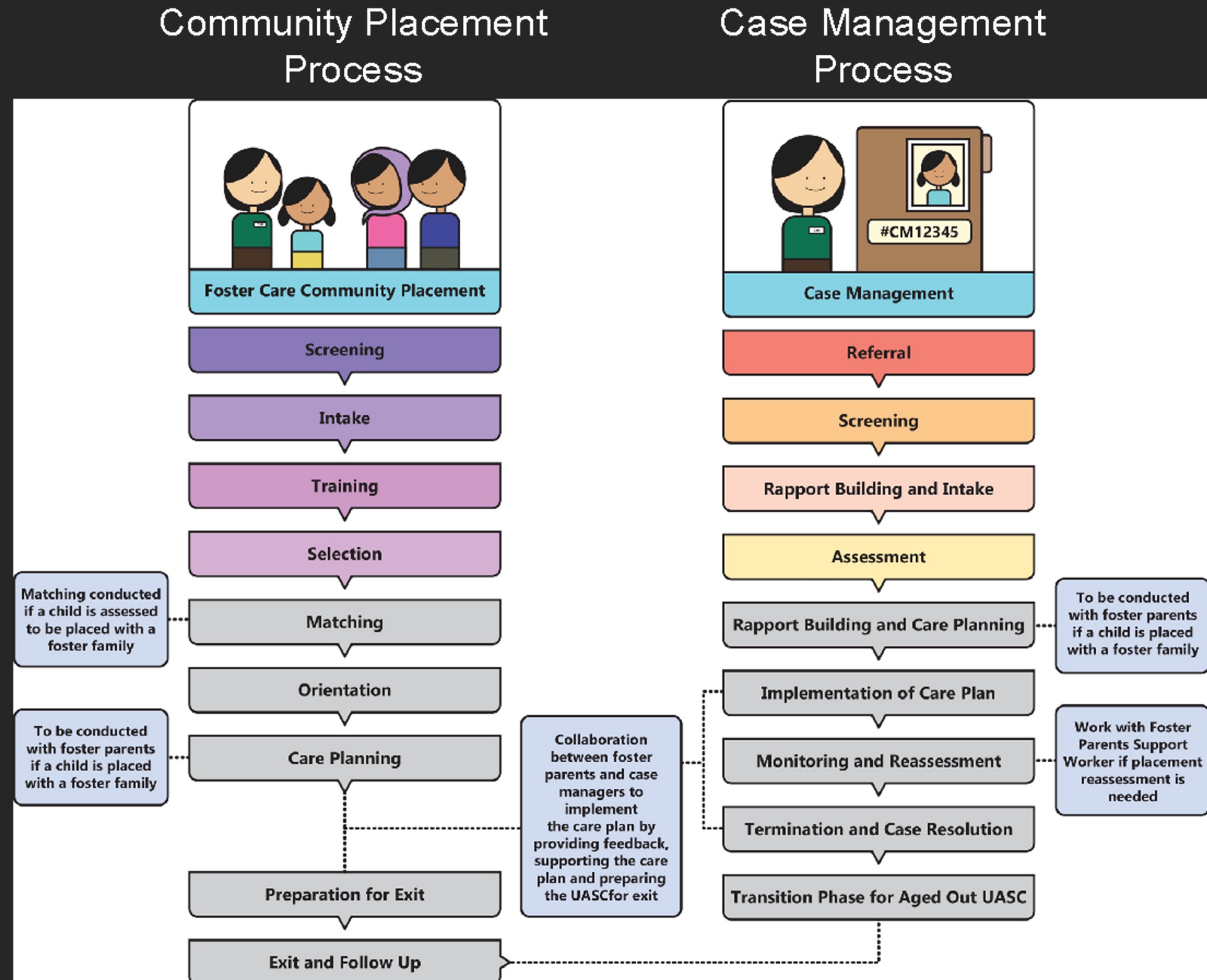


Being from similar background means that our foster families are mainly refugee & asylum seeking families.

In our programme, we incentivise our foster parents by providing:

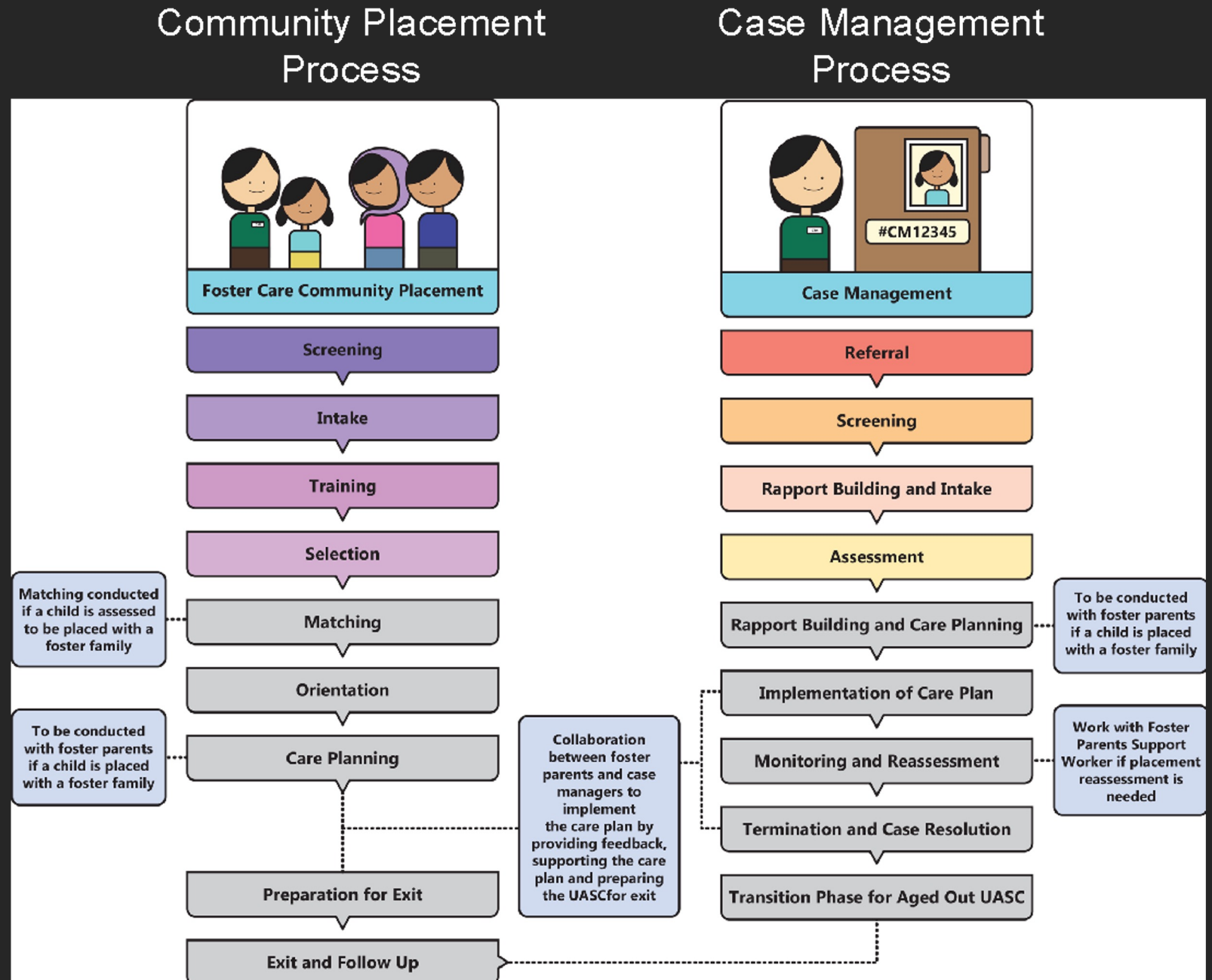
- Rent for the room to be occupied by the UAM
- Food for the UAM
- Fees for educational/ developmental needs
- Medical/ Counselling and other incidentals
- Extra-curricular activities.

This is to ensure that the foster parents are not required to use their own financial resources to support the UAM.



Both the community placement and case management process function independently until they converge after selection (for community placement) and assessment (for case management).

For the community placement side of the process, the selection phase decides if the UAM can be entrusted into the care of potential foster parents, who should have adequate resources and the capacity to provide for the UAM holistically.

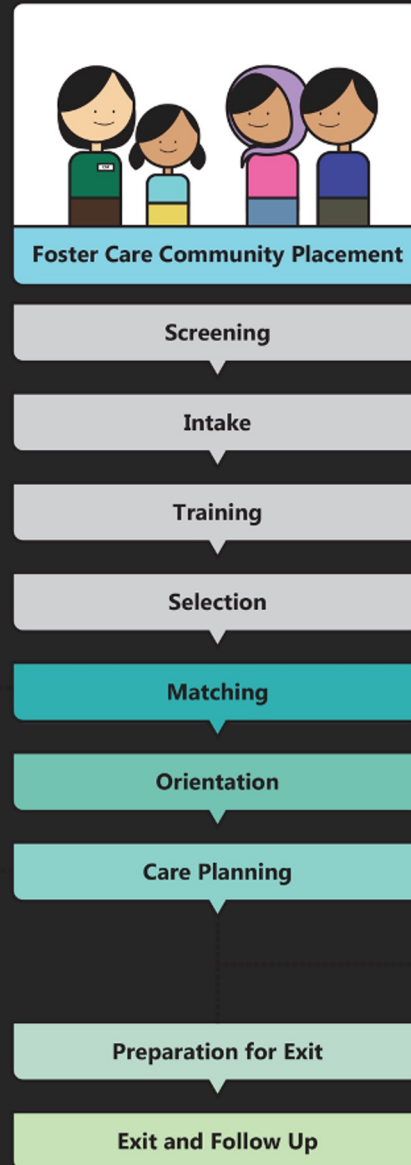


After assessment (at a case conference) is made to determine support for the UAM, the UAM is then matched with the suitable foster parents.

The case manager subsequently develops the care plan with both the UAM and the foster parents to outline specific actions required to meet the needs and goals identified by the UAM.

As our programme's focus is on case management with community placement as a subset to address alternative care needs, the case manager plays a significant role in the care plan implementation.

Community Placement Process

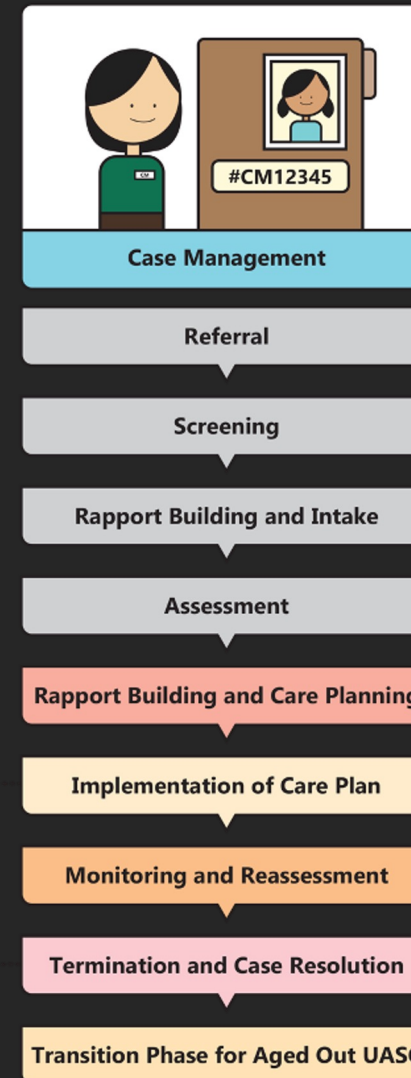


Matching conducted if a child is assessed to be placed with a foster family

To be conducted with foster parents if a child is placed with a foster family

Collaboration between foster parents and case managers to implement the care plan by providing feedback, supporting the care plan and preparing the UASC for exit

Case Management Process



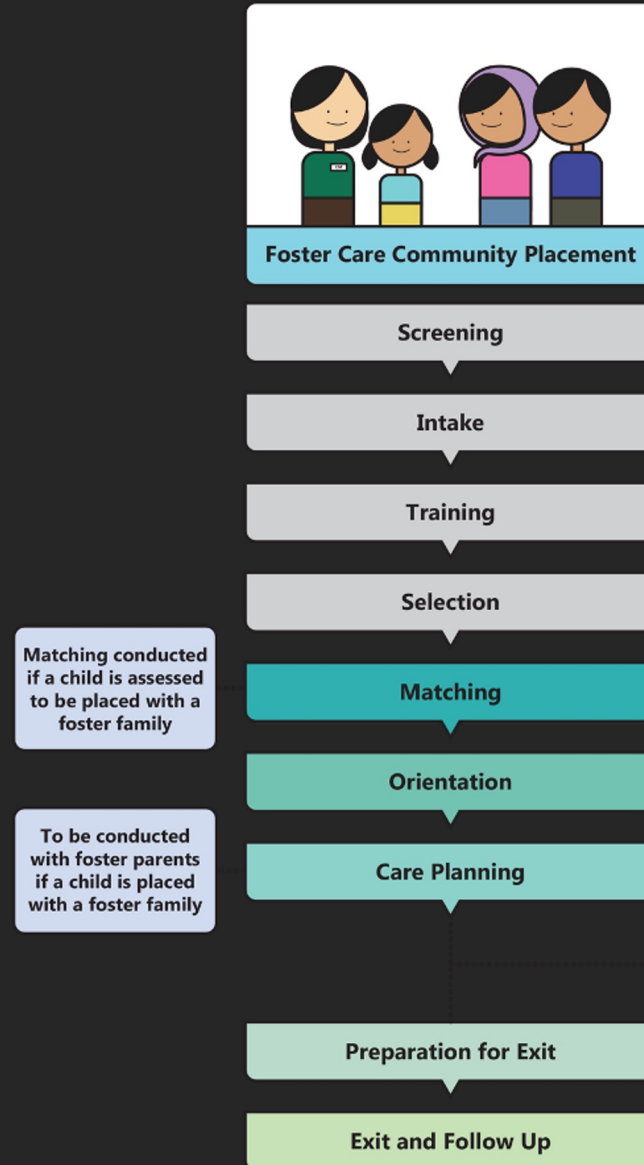
To be conducted with foster parents if a child is placed with a foster family

Work with Foster Parents Support Worker if placement reassessment is needed

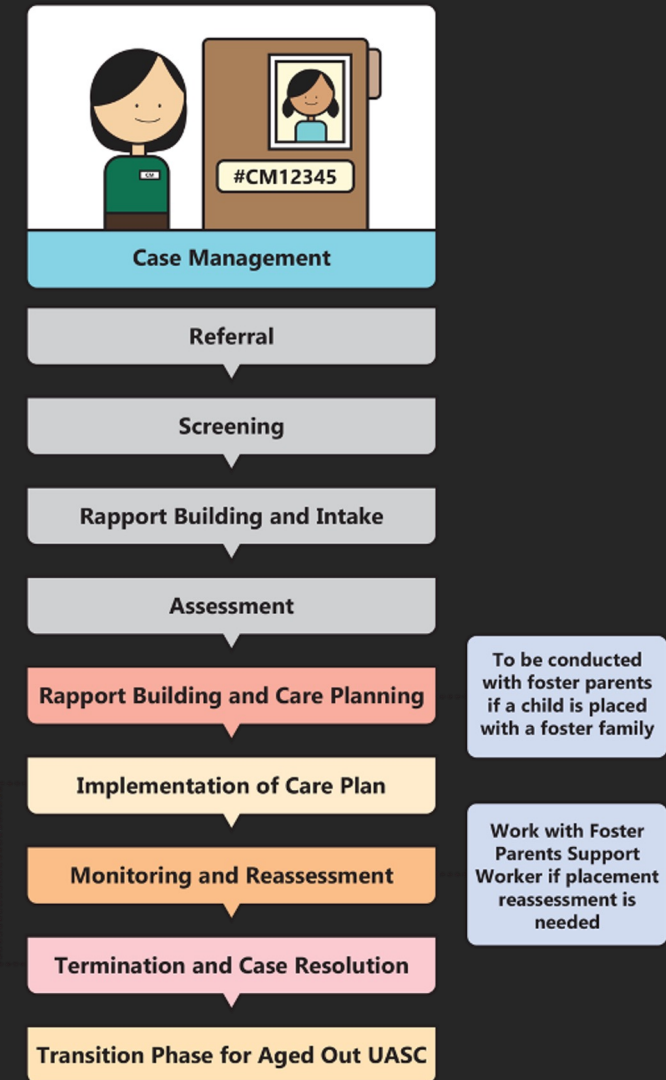
Termination of a case may occur under the following circumstances:

- A case is closed when all the goals have been met and new goals are not required.
- A durable solution is achieved (voluntary repatriation or resettlement).
- The UAM ages out upon turning 18 (moved to the transition phase of the program).
- The UAM no longer wanting to receive services.
- The agency decides to terminate the case.
- The minor has been referred to another service provider.

Community Placement Process



Case Management Process



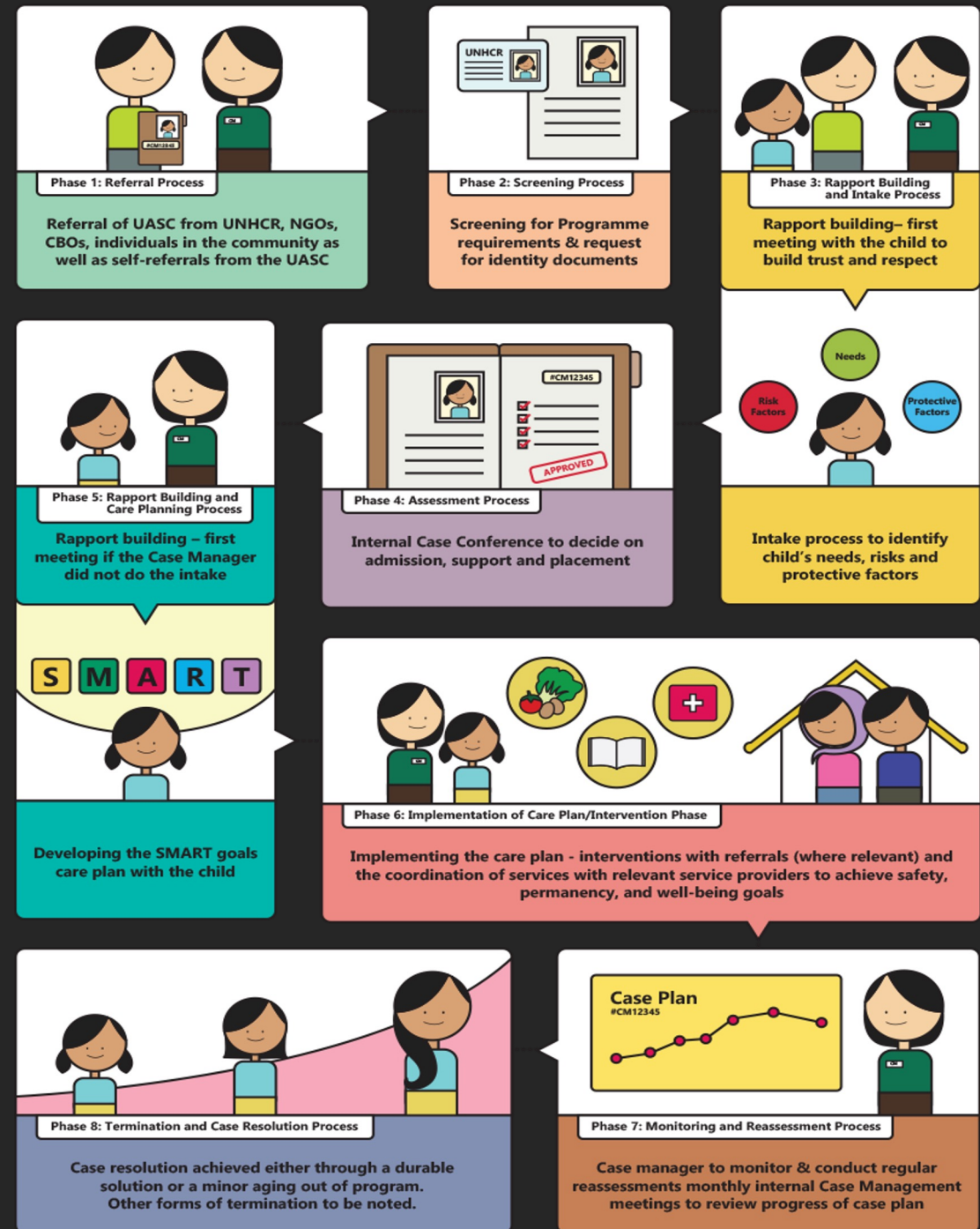
Lifecycle of Community Placement Case Management

CPCM Lifecycle

A typical UAM would be in our program for approximately two years. Most enter our program at ages 15-16 year's old. During the two year he or she would go through the following steps within the case management process –

- Referral Process
- Screening Process
- Intake Process
- Assessment Process
- Care Planning Process
- Implementation Process
- Monitoring & Reassessment Process
- Termination & Case Resolution Process

Once the UAM leaves the program, the foster parents will decide if they want to continue to serve as a foster parents to the next UAM entering our program.




Case Management and Community Placement Resources

<https://www.sukasociety.org/resources/>


COMMUNITY PLACEMENT AND CASE MANAGEMENT (CPCM) PROGRAMME MANUAL FOR UNACCOMPANIED AND SEPARATED CHILDREN (UASC)

COMMUNITY PLACEMENT AND CASE MANAGEMENT (CPCM) PROGRAMME MANUAL FOR UNACCOMPANIED AND SEPARATED CHILDREN (UASC)
ANNEXES

MANUAL ON FOSTER CARE FOR UNACCOMPANIED AND SEPARATED CHILDREN

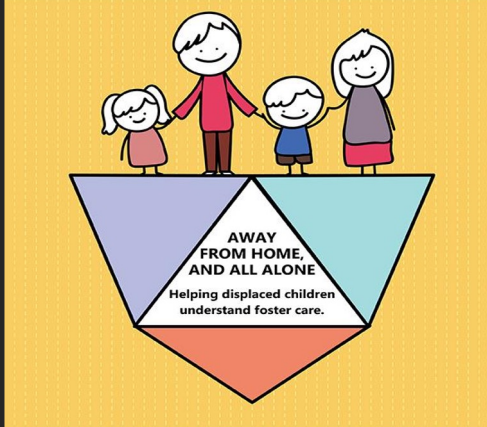


HANDBOOK FOR FOSTER CARE AGENCY



HANDBOOK FOR FOSTER PARENTS

HANDBOOK FOR CHILDREN IN FOSTER CARE



AWAY FROM HOME, AND ALL ALONE
Helping displaced children understand foster care.

SUKA Society is set up to protect the best interest of children. We work towards:

- Protecting victims of human trafficking
- Restoring children in contact with the law
- Conducting youth development programs
- Training those who work closely with children
- Providing follow-up care for refugee children
- Empowering young people to do good

Please contact us if you would like to support or donate to SUKA Society:

P.O.Box: No 013, Jalan Sultan,
46670 Petaling Jaya

Email: enquiry@sukasociety.org

Tel No: 03-78774227

Find us online!

www.sukasociety.org

twitter.com/sukasociety

facebook.com/sukasociety



Panel Discussion and Q&A



Opportunity to Join the Task Force on Foster Care

The **Task Force on Foster Care** has been established to provide a platform for sharing and learning on foster care practice experiences from different contexts across the globe.

The group will meet on the Tuesday following each webinar. Learnings from this platform will inform the development of a Thematic Brief on Foster Care.

We encourage and welcome people with lived experience of foster care, foster carers, practitioners, Government actors, and those interested in sharing their experience of the implementation of foster care services to join the Task Force.

If you are interested in joining the Task Force, please sign up to the Transforming Children's Care Global Collaborative Platform and request to join the 'Foster Care Group'.

<https://www.transformcare4children.org/user/register>



Transforming Children's Care

GLOBAL COLLABORATIVE PLATFORM

**THANK
YOU FOR
JOINING!**

Please see the chat box for a link to learn more about the [Transforming Children's Care Global Collaborative Platform](#) and find out how to join.

We will be sending you a link to the webinar recording and slides in a follow-up email shortly. If you have questions, comments or recommendations for future webinar topics, please send them to:

contact@transformcare4children.org

En el chat encontrará un enlace para obtener más información sobre la [Plataforma de Colaboración Mundial para la Transformación de la Atención Infantil](#) y saber cómo unirse a ella.

En breve le enviaremos un enlace a la grabación del seminario web y a las diapositivas en un correo electrónico de seguimiento. Si tiene preguntas, comentarios o recomendaciones para los temas de futuros seminarios web, envíelos a:

contact@transformcare4children.org



Transforming Children's Care

GLOBAL COLLABORATIVE PLATFORM